

St. Columba's
Primary School Clady



CRED in Practice



Introduction

St. Columba's Primary School is a Catholic Maintained School situated on the outskirts of Clady. It is a small rural primary school, serving the families in the village and surrounding catchment area. It is a small school, with 127 and 5 teachers including a teaching principal, Mrs Colette Maguire.

The school was built in 1967 and was therefore not subject to the constraints imposed on the new building of today. It has four spacious classrooms, each with its own cloakroom area. There is a large hall, which is used for P.E, assemblies, curricular and dramatic presentations and school meals. Meals are transported from St. Mary's Girls' School Meals Kitchen.

The school building is set in spacious attractive grounds and used effectively to support teaching and learning. The standard of maintenance is excellent. The Board of Governors and staff, with the support of parents, are continually striving to improve the environment of the school. A successful Parent Fund-Raising Committee has been established.

St Columba's Primary School is at the heart of the community in Clady. In St Columba's there is a very strong sense of belonging and loyalty where children and adults respect, appreciate and learn from each other. This is very evident from their Mission and Aims included in Appendix 1: 'Mission and Aims of St Columba's Primary School.'

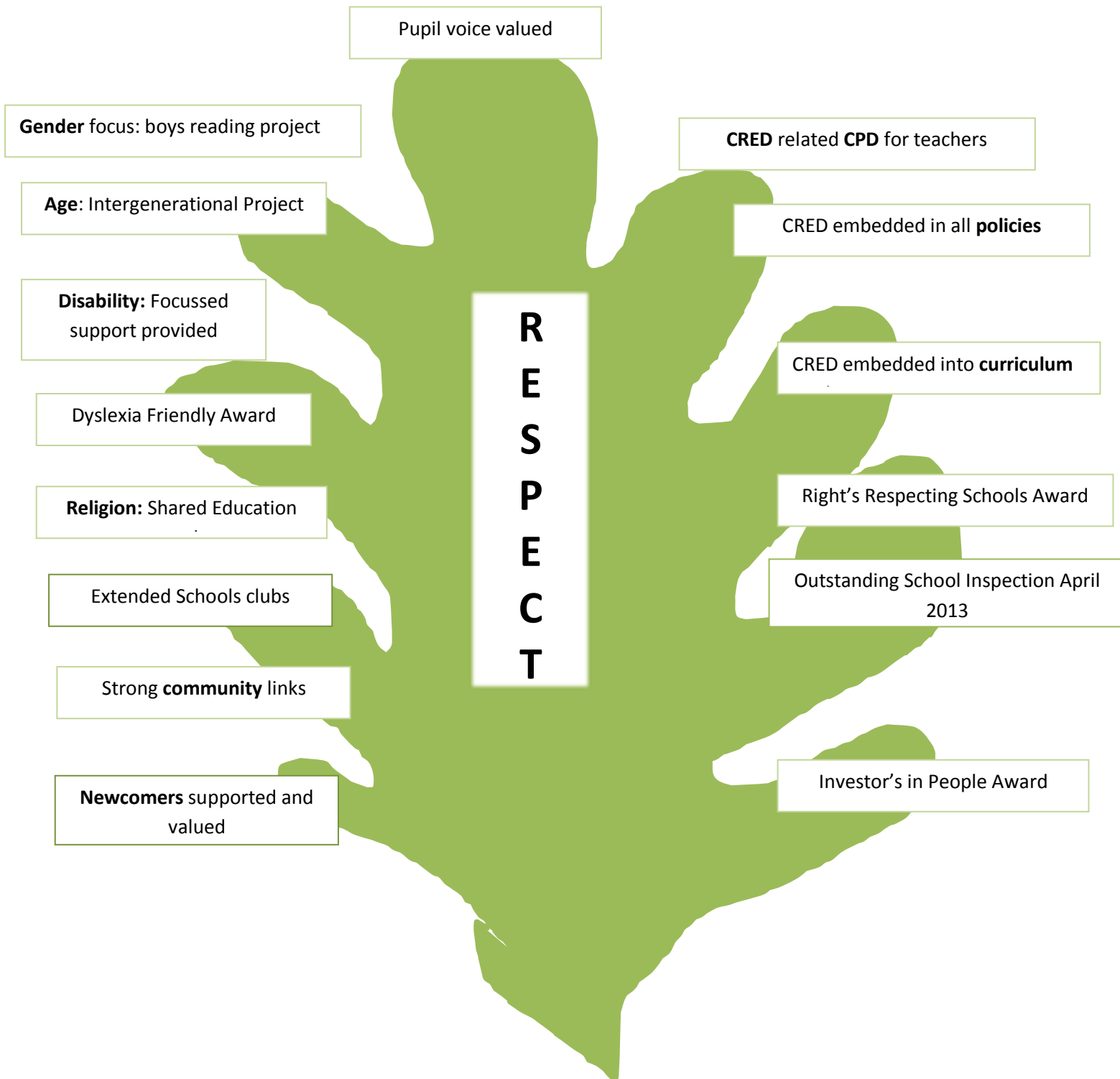
An extract from their Mission Statement is very child focused:

"We appreciate you entrusting your children to our care and together we will work as a team to promote their education and well-being. We want to make a difference in your children's lives and for every child to reach his or her full potential."

"From little acorns grow mighty oaks."

The school motto, above, is very prominent in all logos and all school staff aim to ensure that every child is valued. The development of the 'whole child' is central to the vision of the school.

CRED is embedded into the fabric of the school and is never seen as a bolt on. Some of the types of CRED work in the school are highlighted below.



Exemplar CRED Focus: Age:

The school has been running a very successful Grandparent's project. Grandparents were invited into the school to work with their grandchildren- they created beautiful statuettes together, which symbolized the child and his/her grandparent. There was an entertainment concert provided for grandparents at Christmas. Grandparents have participated in other art and design work and have helped with fundraising events in school.

"It was a wonderful experience making the statue with my grandson in his own school. I felt very welcomed and was never made to feel I was too old to do anything."

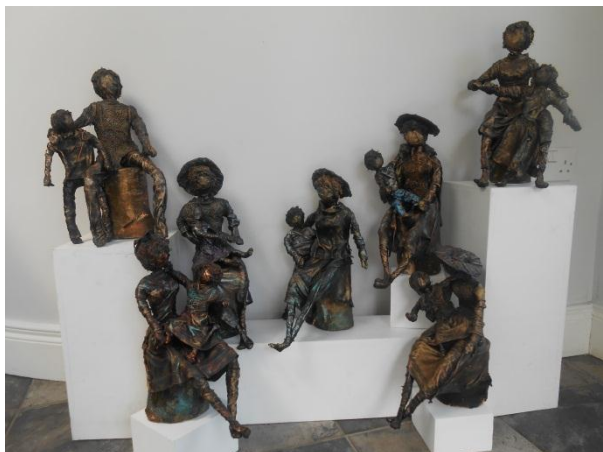
Grandparent

The grandparents were made to feel very welcome in the school and appreciated getting to know the school, staff and what the children do. The children loved having their grandparents in their school and were delighted to have the opportunity to work together and also to show off their talents to them.

Intergenerational Grandparents' Project



Some of the grandparents and their grandchildren involved in the project



Examples of the wonderful statuettes created by children and their grandparents

Exemplar CRED Focus: Religion

The school has worked closely with their nearest controlled school, Killen PS. Pupils from reception to Year 2 explored similarities and differences using the Media Initiative for Children 'Respecting Differences' programme. All foundation stage teachers and classroom assistants were trained in the programme. They used the range of puppets to explore their similarities and differences.

- For example, the children talked about the puppets Tom and Jim and how they liked different sports and in particular different Scottish football teams. However, Tom and Jim realized that they could still be friends. The children got to know each other through learning and playing together and now have a better understanding of difference and diversity within their community.

They have also been on joint educational visits together and shared curriculum focussed activities.



Children using puppets to explore similarities and differences

Shared learning experiences with pupils from St Columba's and Killen Primary School



Outcomes and evidence of addressing the aim and objectives of the CRED Policy:

- The range and depth of the CRED related work in the school has **contributed to improving relations between communities and undoubtedly the children have developed their own self-respect and for others.**
- Opportunities have been provided for children to **build relationships with those of a different background and tradition:**
 - Children have worked with and played with children from a neighbouring controlled school, Killen PS. They explored similarities and differences using the Media Initiative for Children 'Respecting Difference' programme.
- The range and depth of work ensures that all children and adults **have an understanding of and respect for the rights, equality and diversity of all without discrimination:**
 - There is very clear evidence of this through the work the whole school has been focussed on through the Rights Respecting School's Award. All classes have spent valuable time discussing and agreeing on class charters and have explored the 'Rights of a Child'. Children are using language and behaviours that are respectful to others regardless of ability, disability, religion and race. This is evident within their own school setting and also during shared classes with their partnering controlled school.



Year 4 and 5 Class Charter



Year 1 Class Charter

- Children have **developed of a range of skills, capabilities and dispositions and attitudes;**
 - Evidence includes the discussions, debates and consensus for agreeing the class charters. Every child had an opportunity to speak and their voice was valued and respected.
 - Through their work with their grandparents they displayed respect for age- not only for their own grandparents but for others as well.
- There has been significant opportunities for the pupils to contribute actively to their **own learning through taking personal responsibility, thinking and making decisions** and by being part of a group:
 - Through engagement in various whole school projects such as Eco Schools, Rights Respecting School's Award, Helping Hands work, and Anti Bullying Week.



**'Helping Hands' in every class-
developing mutual respect for each other.**

Conclusion:

St Columba's Primary School, Clady is a clear example of a school that has embedded CRED into every area of school life, either consciously or sub-consciously. The school has contributed to improving relations between communities and other CRED focused groups. The children clearly value and respect difference and have engaged positively with it through a number of ways. The principal and staff have actively helped to remove barriers to learning when appropriate and have helped to raise standards for all. There are many examples of the positive impact of CRED interventions through-out the school.

List of Appendices

Appendix 1: Mission and Aims of St Columba's Primary School

St. Columba's Primary School

From Little Acorns Grow Mighty Oaks

We in St. Columba's Primary School encourage our pupils to fulfil their full potential and to enrich the quality of their lives by enabling them to:

- develop their religious, emotional, social, physical and intellectual well being
- develop confident children with high self-esteem, respecting themselves, others and their environment
- develop fully all pupils' abilities, interests and aptitudes
- achieve high standards in all areas of the curriculum
- gain advanced technological skills
- become self motivated life-long learners
- develop enquiring minds and a spirit of curiosity
- to work independently and collaboratively

We believe each pupil will succeed through experiencing quality in terms of:

- a happy, welcoming and stimulating learning environment
- a sense of belonging and loyalty where children and adults respect, appreciate and enrich each other
- an ethos of support, challenge and encouragement to achieve
- a community where love and learning come to life in an atmosphere of mutual trust and understanding
- an enriching programme of extra-curricular activities and educational visits
- a broad and challenging curriculum
- a rich, varied and up to date range of learning resources
- innovative teaching in an investigative approach to learning
- learning partnerships between home, school and the community

St. Columba's Primary School strives to make a positive difference in the lives of children.